



VOLTRIUM[®]

Ion Max

Owner's Manual

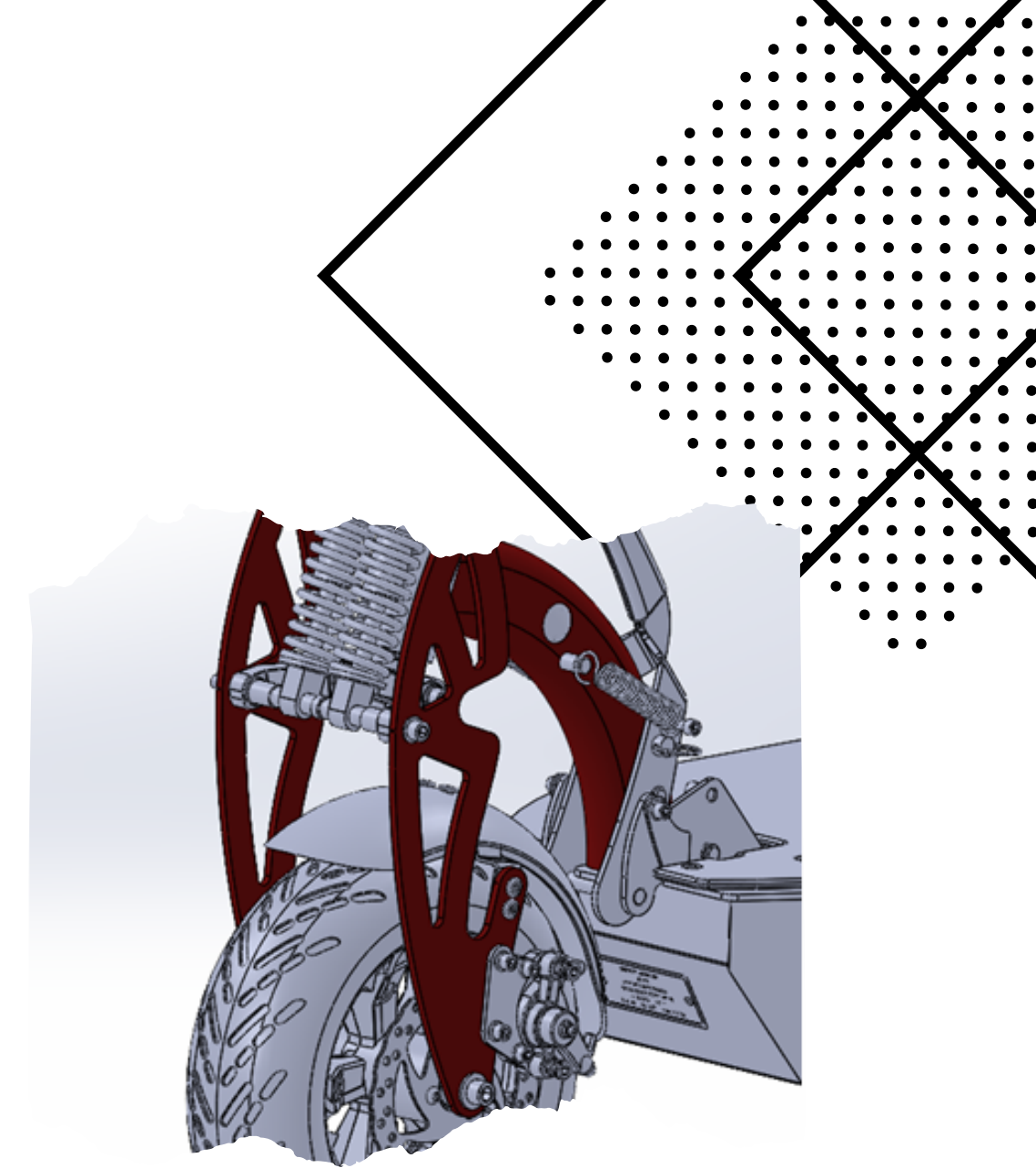
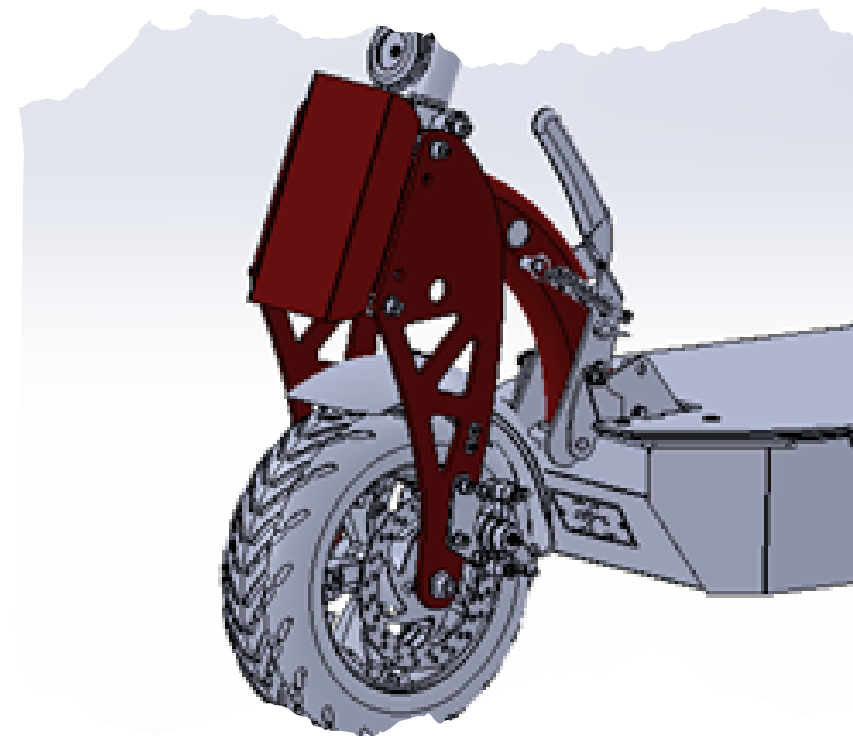
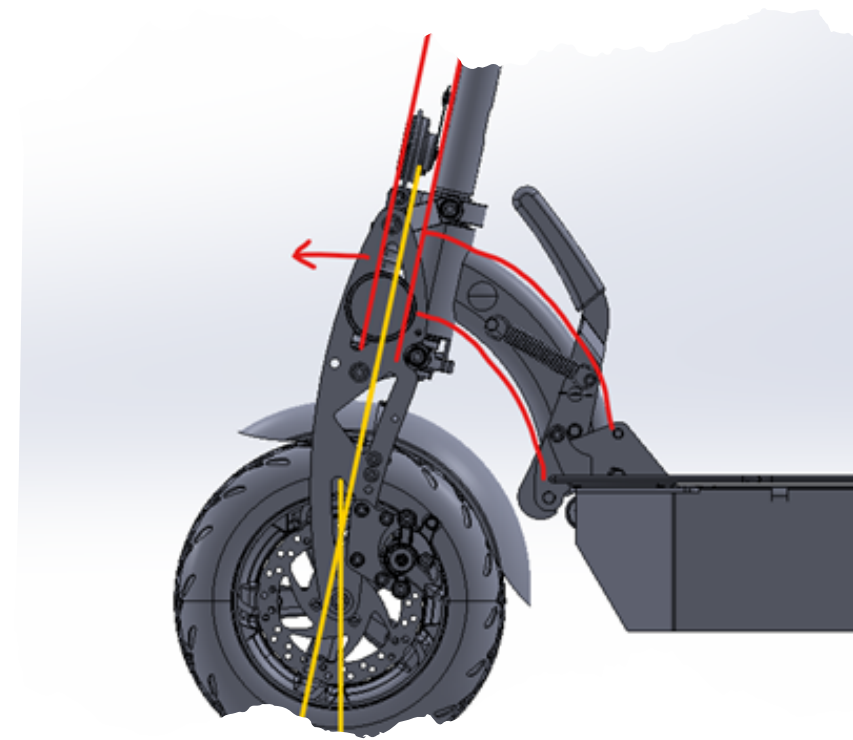
CONGRATULATIONS AND THANK YOU!

Congratulations on your brand new Voltrium and thank you for supporting the only brand in Australia that designs and engineers their products locally.

It has been an absolute pleasure involving Australian industry and clever minds locally to bring the Voltrium Ion series to life

We hope everytime you hop on for a ride you can feel the passion behind our team

Because to us at Voltrium, it's more than just a scooter.

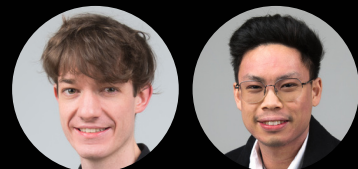


Hi, it's Jeff & Daniel here, the founders of Voltrium. We'll be popping up throughout this manual when we have a pro tip or valuable insider information to share about our scooters!

INSIDE THE BOX

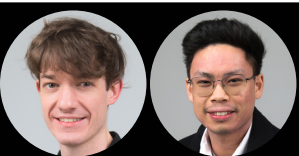
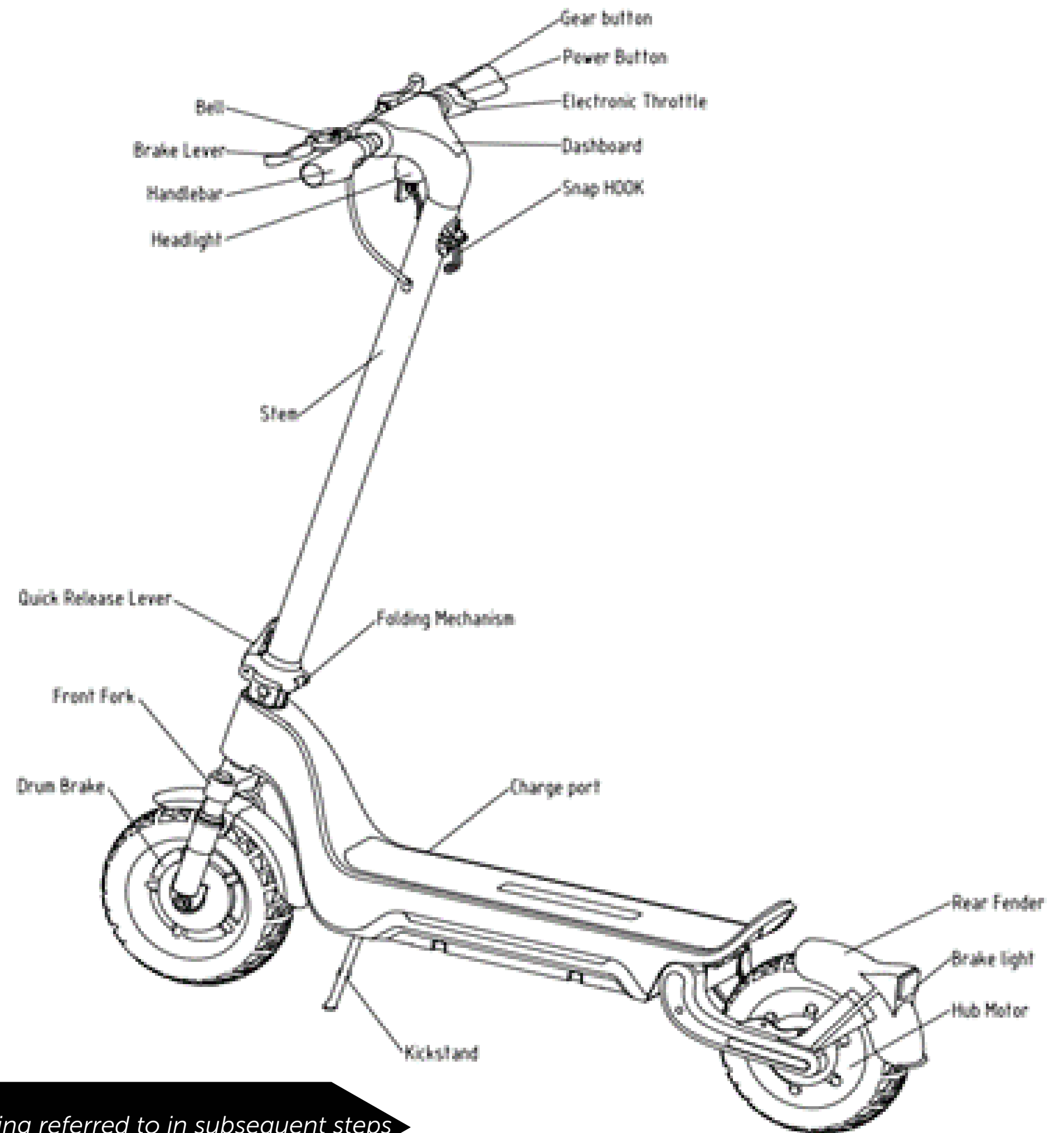
Woohoo! You have received the scooter. Now let's unbox it and hit the paths.

- ☐ Voltrium Ion MAX
- ☐ Charger
- ☐ LED Headlight
- ☐ Emergency Toolkit
- ☐ Voltrium NFC Card
- ☐ Accessories (If optioned)



Pro Tip: Use this checklist and tick the boxes as you remove the packaging to ensure you have received everything.

ION MAX DIAGRAM



Pro Tip: Come back to this diagram if unsure which part of the scooter is being referred to in subsequent steps

GETTING STARTED

Let's Unfold the scooter, it's as easy as 123

1 Remove the Ion MAX from the box.

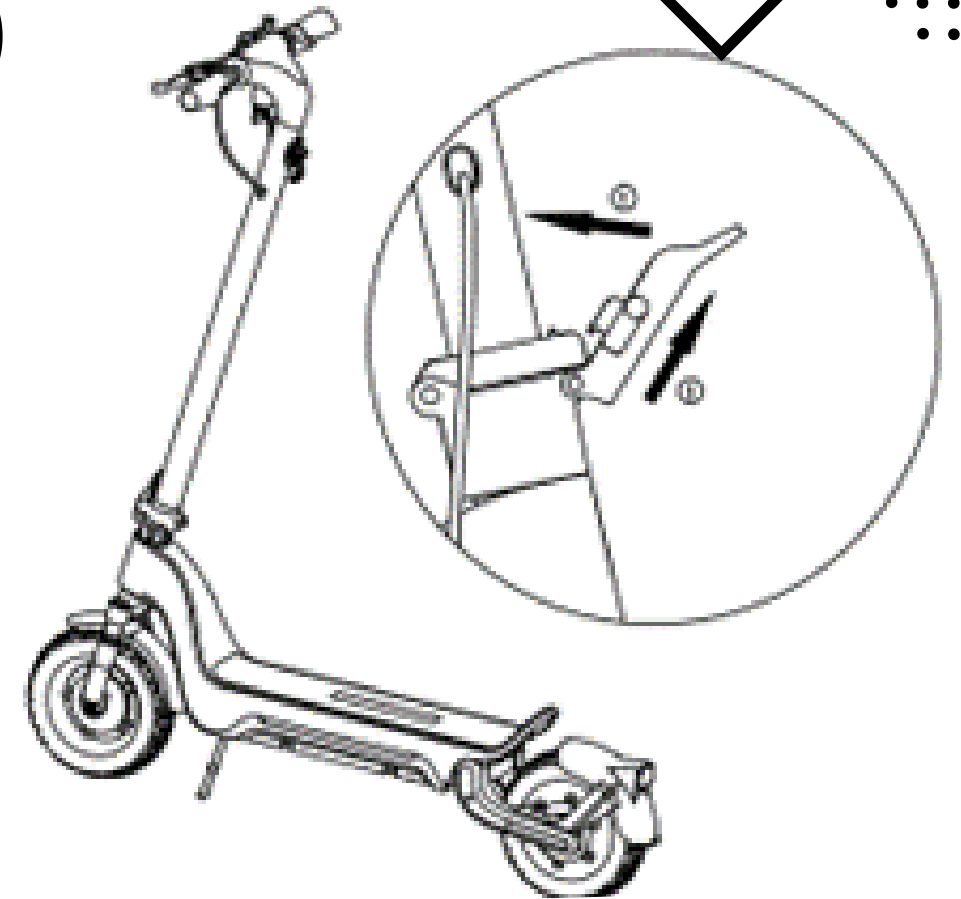
2 Unfold the handlebar stem and lock into place the quick release lever.

3 Unfold the kick stand so the scooter can stand upright

1



2



3



GETTING STARTED

Now, we'll attach the handlebars

- Plug in the display module connector, to the corresponding plug on the scooter side (emerging from the steering column).
- Mount the display module onto the steering column lining up the screw holes (see image).
- Fasten the display to the steering column by using the supplied screws.



GETTING STARTED

Attatching the LED Headlight

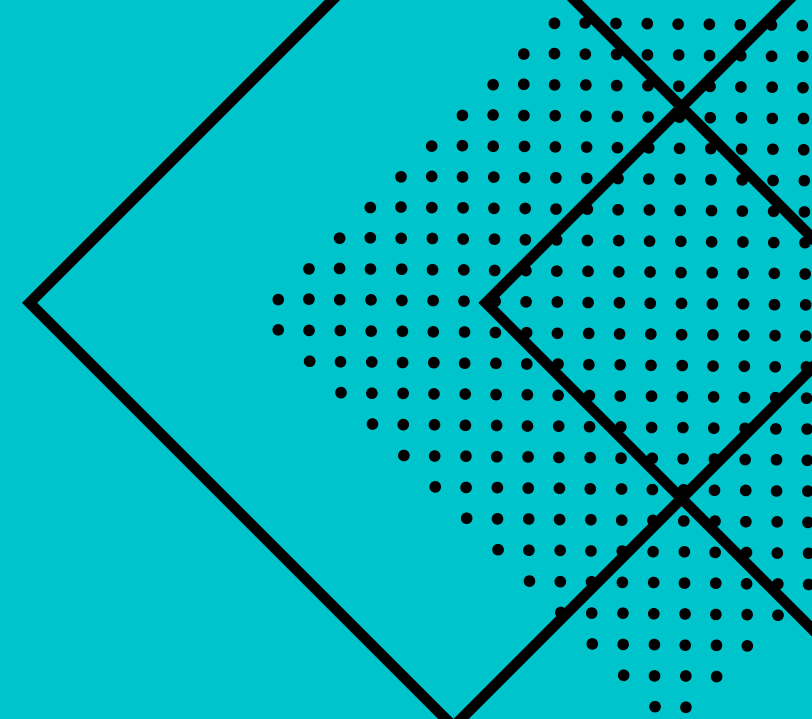
- 1** Locate the headlight and mounting screw for the headlight.
- 2** Using the provided Allen Keys, Fasten the headlight the the steering column as shown. The angle of the light can also be tilted up or down to suit your needs.



PRE-RIDE CHECKS

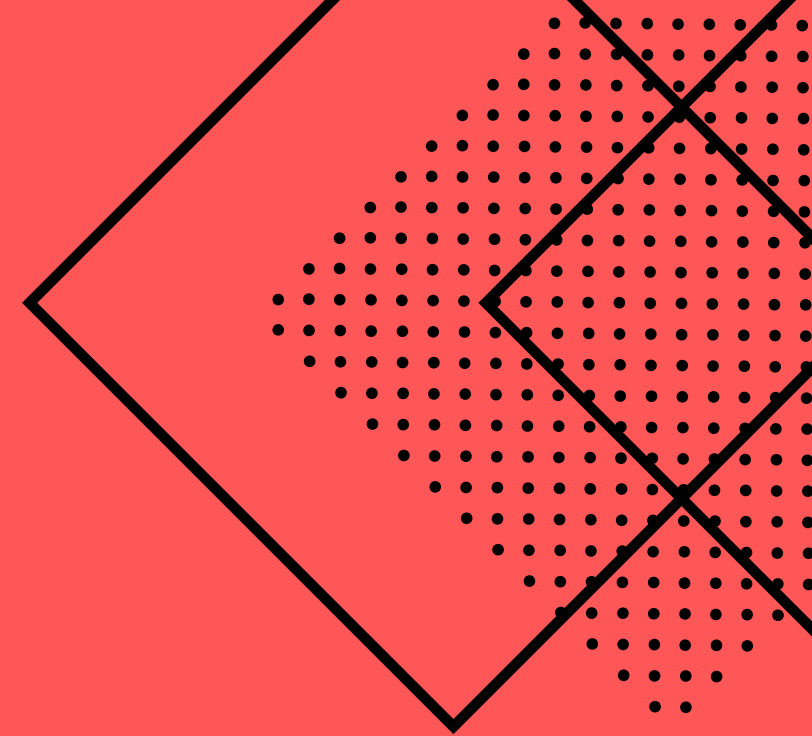
To ensure you get the most of your first ride, follow this checklist:

- ☐ Charge Scooter - Until the charger shuts off and illuminates **green** light
- ☐ Ensure lights are working especially if riding at dusk or night
- ☐ Ensure all nuts and bolts are tight on the scooter.
- ☐ Familiarise with the controls of the scooter.



LEGALITIES & PRECAUTIONS

Have fun. Responsibly.



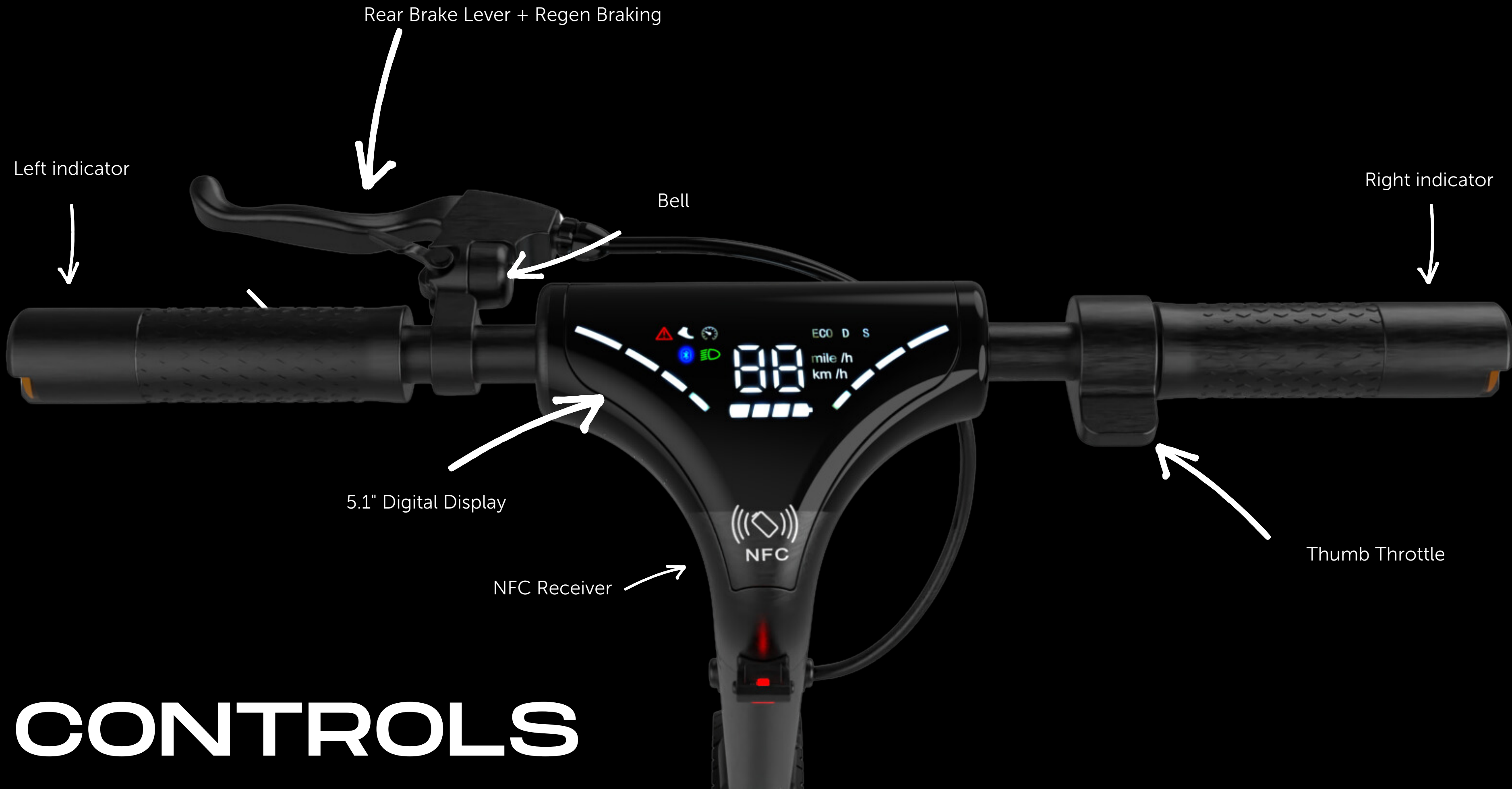
Check with your local State or Territory regarding specific laws governing the use of personal mobility devices (PMD). States and Territories have different laws in place that can prohibit the use of a Voltrium Scooter



Do not ride in a manner that will endanger yourself and surroundings. High Performance riding should only be performed on private property




Always ride whilst wearing safety gear. Failing to do may result in severe penalties with local authorities and or serious injury / death.

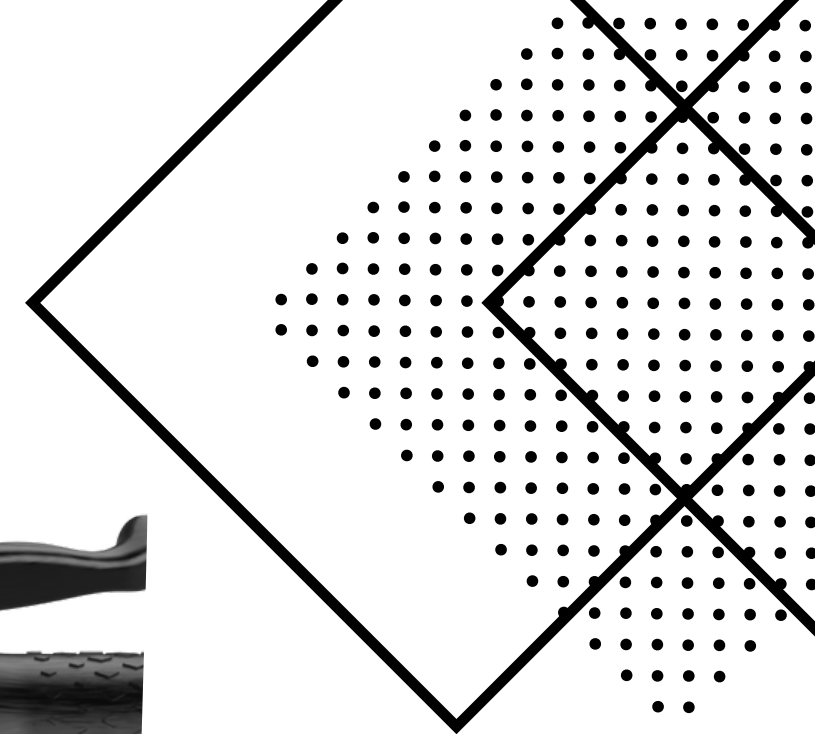


CONTROLS

STARTING THE SCOOTER

- 1** Press and hold the  button until the display powers on and shows " -- ".

The scooter is now in standby mode and the Anti-theft feature is activated. The drive wheels are locked up and a beeping alarm will sound if anyone tries to move the scooter.
- 2**
- 3** To enable drive, scan the NFC keytag in the NFC area. Once the display shows "0 Km/h" you are ready to ride.



Pro Tip: You can leave the scooter in the standby mode when unattended. This will stop thieves from simply wheeling the scooter away.

USING THE MODES

The Ion max is equipped with 4 Performance modes:

- 1: Walk Mode - Makes the scooter move at creeping speed
- 2: ECO Mode - Reduces acceleration and limits top speed.
- 3: D (Drive) Mode - Normal Acceleration and Limits top speed
- 4: Sport Mode - Full performance and top speed.

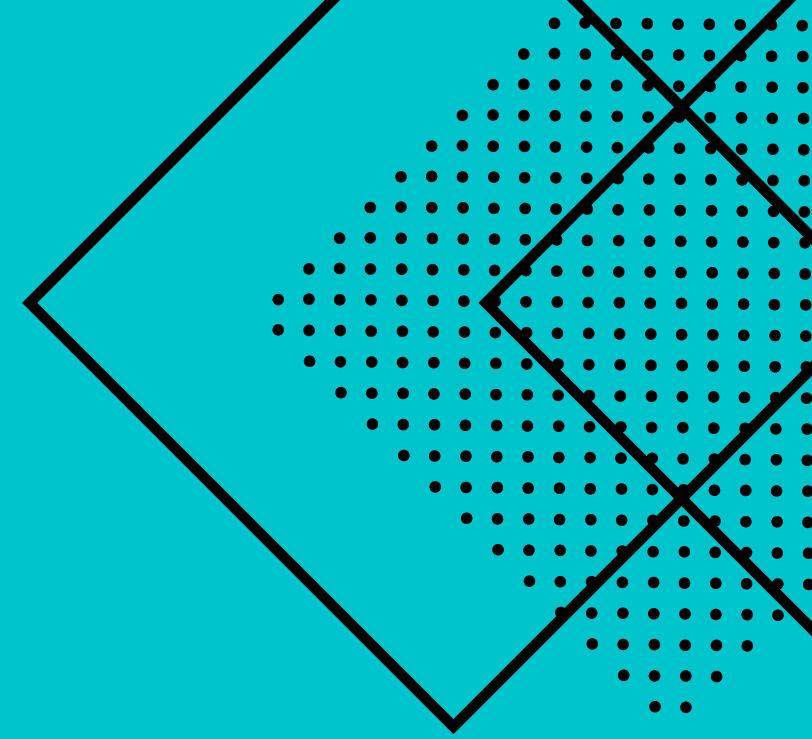
Double press the  button to cycle through your modes.



Pro Tip: We recommend leaving the scooter in Sports Mode for the best riding experience.

MAINTENANCE

Look after the machine and it will look after you.



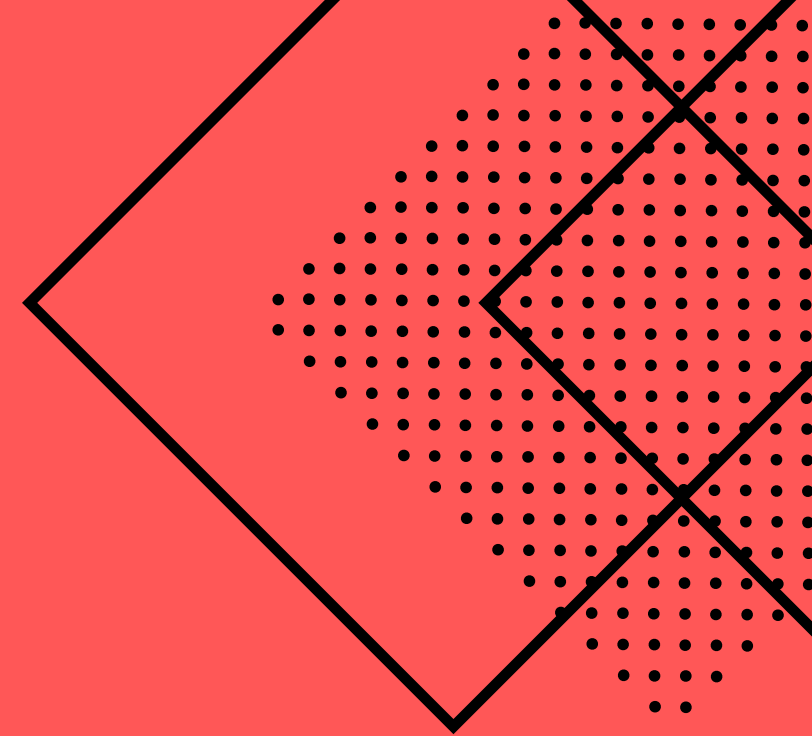
- ☐ Services are recommended every 1000km. This includes an overall checkup of tyres, brakes and checking the tightness of all nuts and bolts.
- ☐ Depending on usage conditions, servicing for specific parts may be required sooner. E.g Brake pads if riding aggressively.
- ☐ Servicing is recommended to be carried out by specialists or trained technicians.



Pro Tip: Voltrium stocks the full range of parts and we have the most common consumables ready on hand usually. You can contact your local scooter shop or visit the Voltrium online parts shop to order in spares.

MODIFICATIONS

Please don't butcher it.



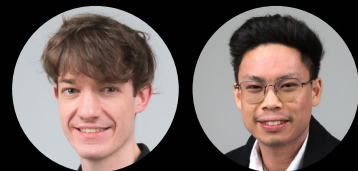
Any modifications to the electrical system will void your warranty.



Mechanical modifications that are not purely for cosmetic purposes will void your warranty



Modifications that obstruct or disrupt the normal repair / servicing process will incur extra labour cost during servicing / repair time.



Pro Tip: Consult with Voltrium's support team if you are planning to modify the scooter in any shape or form to prevent your warranty from being void.